

# KINSHOFER Rotator Line

# Product Features

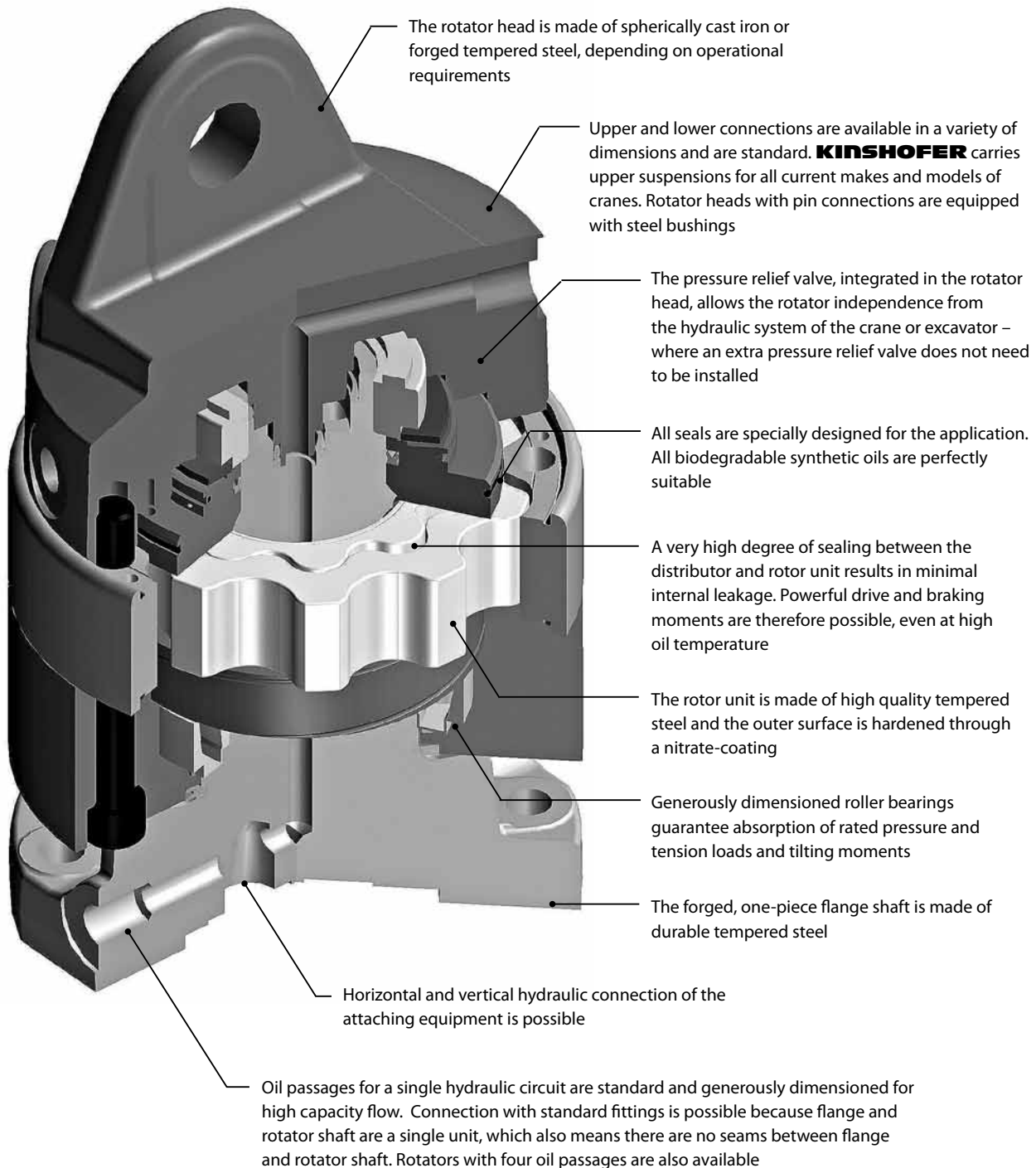
**KINSHOFER** manufactures rotators for truck loaders, excavators and logging operations. Years of experience in designing rotators and hydraulic load handling equipment guarantee high efficiency, long lasting rotators, specially tailored to meet your requirements.

The gear-type design ensures a very compact and powerful rotator. The precision control and braking ability is especially appreciated by operators. A grapple does not rotate unexpectedly when digging, even under maximum load, and there is no need for stability compensation when handling longer lengths of timber... These are only some of the many working situations where operators appreciate the advantages of using **KINSHOFER** rotators.

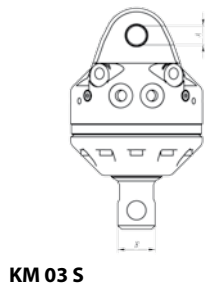
**KINSHOFER** Rotators are the solution.



## Features of KINSHOFER Rotators



## KINSHOFER Gear Type Rotator with Shaft up to 3000 kg Load Capacity (incl. Fittings)

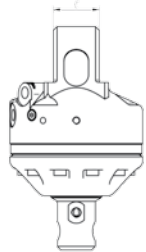


KM 03 S

Type	Load capacity (kg)	Shaft Ø (mm)	Upper connection (Width x Pin-Ø) (mm)	Torque (Nm)	Moment of deflection max (Nm)	Self weight (kg)
KM 03 S	3000	49.5	60 x 25	450	1750	24

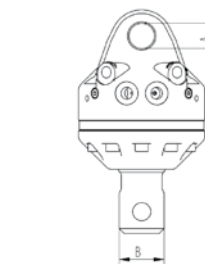


KM 03 S



**Operating pressure:** 32 MPa (320 bar)  
**Pump capacity:** 25 bis 60 l/min  
**Upper hydraulic coupling:** G 3/8''  
**Lower hydraulic coupling:** G 1/4''

## KINSHOFER Gear Type Rotator with Shaft up to 4500 kg Load Capacity (incl. Fittings)



KM 04 S

Type	Load capacity (kg)	Shaft Ø B (mm)	Upper connection (Width C x Pin-Ø A) (mm)	Torque (Nm)	Moment of deflection max (Nm)	Self weight (kg)
KM 04 S59-30	4500	59	84 x 30	850	3000	26
KM 04 S	4500	62	84 x 30	850	3000	26
KM 04 S63-30	4500	63	84 x 30	850	3000	26
KM 04 S68-30	4500	68	84 x 30	850	3000	26
KM 04 S68-30US*	4500	68	84 x 30	1000	4500	28
KM 04 S69-30	4500	69	84 x 30	850	3000	26

\* steel motor-head

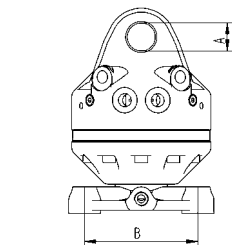


**Operating pressure:** 32 MPa (320 bar)  
**Pump capacity:** 25 to 60 l/min  
**Hydraulic couplings:** M 18 x 1,5



KM 04 S

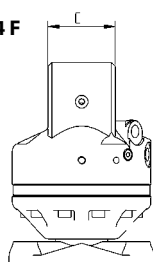
## KINSHOFER Gear Type Rotator with Flange up to 4500 kg Load Capacity (incl. Fittings)



KM 04 F

Type	Load capacity (kg)	Hole pattern of flange B (mm)	Upper connection (Width C x Pin-Ø A) (mm)	Torque (Nm)	Moment of deflection max (Nm)	Self weight (kg)
KM 04 F	4500	□ 140	84 x 30	850	3000	26
KM 04 F140-30US*	4500	□ 140	84 x 30	1000	8500	31
KM 04 F140-30V**	4500	□ 140	84 x 30	850	3000	26

\* steel motor-head  
 \*\*additional vertical connection for the drive unit



**Operating pressure:** 32 MPa (320 bar)  
**Pump capacity:** 25 to 60 l/min  
**Hydraulic couplings:** M 18 x 1,5



KM 04 F

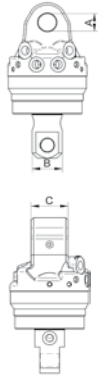


KM 04 F140-30US

# Product Range

# KINSHOFER Rotator Line

## KINSHOFER Gear Type Rotator with Shaft up to 6000 kg Load Capacity (incl. Fittings)

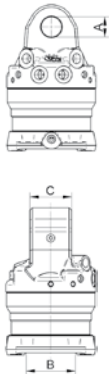


Type	Load capacity (kg)	Shaft Ø B (mm)	Upper connection (Width C x Pin-Ø A) (mm)	Torque (Nm)	Moment of deflection max (Nm)	Self weight (kg)
KM 06 S68-40	6000	68	84 x 40	1000	4500	32
KM 06 S69-40	6000	69	84 x 40	1000	4500	32

**Operating pressure:** 32 MPa (320 bar)  
**Pump capacity:** 25 to 75 l/min  
**Hydraulic couplings – in:** G 1/2''  
**Hydraulic couplings – out:** M 18 x 1,5



## KINSHOFER Gear Type Rotator with Flange up to 6000 kg Load Capacity (incl. Fittings)

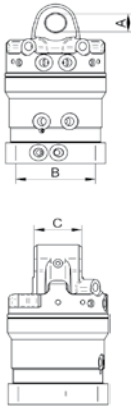


Type	Load capacity (kg)	Hole pattern of flange B (mm)	Upper connection (Width C x Pin-Ø A) (mm)	Torque (Nm)	Moment of deflection max (Nm)	Self weight (kg)
KM 06 F140-40	6000	□ 140	84 x 40	1000	8500	34

**Operating pressure:** 32 MPa (320 bar)  
**Pump capacity:** 25 to 75 l/min  
**Hydraulic couplings – in:** G 1/2''  
**Hydraulic couplings – out:** M 18 x 1,5



## KINSHOFER Gear Type Rotator with Flange and 4 Oil Ducts to operate 2 different Functions (incl. Fittings)



Type	Load capacity (kg)	Hole pattern of flange B (mm)	Upper connection (Width C x Pin-Ø A) (mm)	Torque (Nm)	Moment of deflection max (Nm)	Self weight (kg)
KM 04 F140-30-4	4500	□ 140	84 x 30	850	3000	40
KM 06 F173-35-4	6000	Ø 173	81 x 35	1000	8500	45
KM 10 F173-35/2-4	10000	Ø 173	81 x 35	2000	12000	72

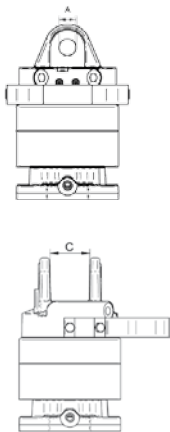
**Operating pressure:** KM 04 F140-30-4: 32 MPa (320 bar); KM 06 F173-35-4: 32 MPa (320 bar); KM 10 F173-35/2-4: 32 MPa (320 bar)  
**Pump capacity:** KM 04 F140-30-4: 25 to 50 l/min; KM 06 F173-35-4: 25 to 75 l/min; KM 10 F173-35/2-4: 26 to 75 l/min  
**Hydraulic couplings (Rotator and Grapple):** KM 04 F140-30-4: M 18 x 1,5; KM 06 F173-35-4: G 1/2''; KM 10 F173-35/2-4: G 1/2'' and G 3/4''



KM 04 F140-30-4

KM 04 F140-30-4

## KINSHOFER Gear Type Rotator with Flange for Logging (incl. Hose Guard and Fittings)



Type	Load capacity (kg)	Hole pattern of flange B (mm)	Upper connection (Width C x Pin-Ø A) (mm)	Torque (Nm)	Moment of deflection max (Nm)	Self weight (kg)
KM 06F 173-35	6000	Ø 173	81 x 35	1000	8500	34
KM 10F 173-35/1	10000	Ø 173	81 x 35	2000	12000	62
KM 10F 173-35/2	10000	Ø 173	81 x 35	2000	12000	65
KM 10F 173-45	10000	Ø 173	100 x 45	2000	12000	68
KM 10F 173-52	10000	Ø 173	136 x 52,2	2000	12000	70

**Operating pressure:** 32 MPa (320 bar)  
**Pump capacity:** 25 to 75 l/min  
**Hydraulic couplings (Rotator and Grapple):** G 1/2''



KM 10F 173-35/1

KM 10F 173-35/1

## KM 501 – Upper Suspension between Rotator and Crane



KM 501

An upper suspension is a cardan link between rotator and crane. It is available for all current makes and models of cranes. Please specify dimensions when ordering

Type	Load capacity (kg)	Self weight (approx. kg)
KM 501 3000	up to 3000	5
KM 501 4500	up to 4500	10
KM 501 6000	up to 6000	15
KM 501 10000	up to 10000	25

## KM 511 – Upper Suspension with Pendulum Damper between Rotator and Crane



KM 511

A pendulum damper reduces the horizontal swing of the attachment. It can also be retrofitted to an existing upper suspension

Type	Load capacity (kg)	Self weight (approx. kg)
KM 511 4500	up to 4500	15
KM 511 6000	up to 6000	20
KM 511 10000	up to 10000	30

## KM 206 – Hose Guard



The hose guard is a metal bow to be attached onto the rotator. It is designed to protect the hoses of the rotator from damage i.e. from protruding branches

Type	Self weight (approx. kg)
KM 206 hose guard for the rotator	3

## KM 502 – Reduction Link between Rotator and Grapple



KM 502

A reduction link adapts a shaft type rotator to an attachment with a standard hole pattern for a flange

Type	Load capacity (kg)	Self weight (approx. kg)
KM 502 3000	up to 3000	2
KM 502 4500	up to 4500	3
KM 502 6000	up to 6000	4



KM 502-AD



KM 502-FL

## Accessories for Attaching Pallet Forks etc.



KM 460 03

Type	Description	Type of rotator	Weight (kg, approx.)
KM 460 03 KM 03 S	rigid suspension link with pin for all	KM 03	8
KM 460 03 KM 04 S	<b>KINSHOFER</b> shaft-type rotators	KM 04	10

KM 460 08 KM 03 S	rigid hook for all	KM 03	8
KM 460 08 KM 04 S	<b>KINSHOFER</b> shaft rotators	KM 04	9

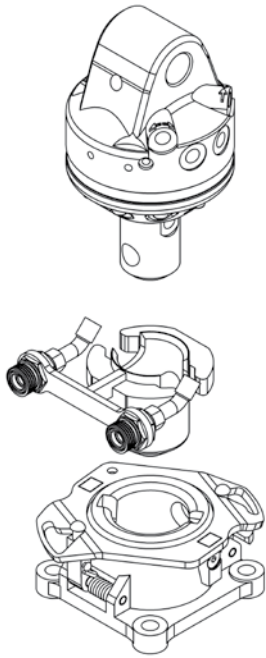


KM 460 04

KM 460 04 KM 04 S	non-rotating swinging hook for all	KM 04	12
KM 460 04 KM 06 S	<b>KINSHOFER</b> shaft rotators	KM 06	15

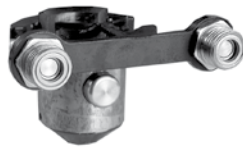
KM 460 10	non-rotating swinging hook for all <b>KINSHOFER</b> flange rotators	KM 10 F173 (KM 04 to KM 10)	25
-----------	---	-----------------------------	----

## KM 505 – Quick Change System for Shaft-Type Rotators

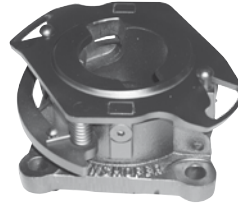


The quick change system enables an easy exchange between different attachments. The mechanical coupling and locking is achieved by the turning motion of the rotator. You simply disconnect quick couplings and disengage the locking device manually. Upper elements of the quick change system are available for all **KINSHOFER** shaft rotators. The KM 505 system can be used on most attachments which allows the versatility to quickly change the application with a minimum of down-time. Not suitable for heavy duty work.

Type	Description	Hole pattern of flange (mm)	Self weight (kg)
<b>KM 505</b>	complete, incl. hydraulic couplings (KM 204 01)	4x Ø18 / □ 140	12
<b>KM 505 01</b>	upper element fitted to rotator incl. 2 mobile parts		5
<b>KM 204 01</b>	mobile part of hydraulic quick coupling (2 pieces) for KM 505 01		
<b>KM 505 02</b>	lower element mounted onto attachment	4x Ø18 / □ 140	7
<b>KM 505 03</b>	rigid suspension link with non-rotating hook to connect to the KM 505 01		7



**KM 505 01**

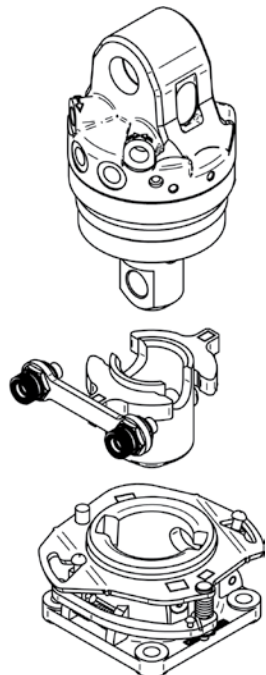


**KM 505 02**



**KM 505 03**

## KM 505 HD – Heavy Duty Quick Change System for Shaft-Type Rotators



The quick change system enables an easy exchange between different attachments. The mechanical coupling and locking is achieved by the turning motion of the rotator. You simply disconnect quick couplings and disengage the locking device manually. Upper elements of the quick change system are available for all **KINSHOFER** shaft rotators. The KM 505 system can be used on most attachments which allows the versatility to quickly change the application with a minimum of down-time. For the use on the universal fork KM 461 and for heavy duty works, we recommend the quick change system KM 505 HD, in combination with rotator KM 04 S68-30US or KM 06 S68-40.

Type	Description	Hole pattern of flange (mm)	Self weight (kg)
<b>KM 505 HD</b>	complete, incl. hydraulic couplings (KM 204 01)	4x Ø18 / □ 140	18
<b>KM 505 01 HD</b>	upper element HD fitted to rotator incl. 2 mobile parts		7
<b>KM 204 01</b>	mobile part of hydraulic quick coupling (2 pieces) for KM 505 01 HD		
<b>KM 505 02 HD</b>	lower element HD mounted onto attachment	4x Ø18 / □ 140	11
<b>KM 505 03 HD</b>	rigid suspension link with non-rotating hook to connect to the KM 505 01 HD		14



**KM 505 01 HD**

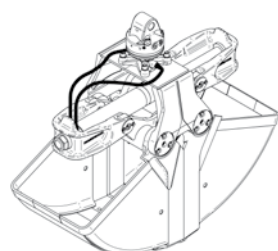


**KM 505 02 HD**



**KM 505 03 HD**

## KM 203 – Connecting Hoses & KM 204 – Hydraulic Quick Change Kit for Hoses



**KM 203 01**



**KM 204 01**

**KM 204 02**

Type	Description
<b>KM 203 01</b>	short connecting hoses between rotator and attachment with standard fittings M 18 x 1,5 (2 pieces)
<b>KM 203 03</b>	long connecting hoses between rotator and crane – please specify dimensions (4 pieces)

<b>KM 204 01</b>	mobile part of hydraulic quick coupling for hose (Ø 10 mm, 2 pieces)
<b>KM 204 02</b>	fixed part of hydraulic quick coupling for rotator (Ø 10 mm, 2 pieces)
<b>KM 204 03</b>	hydraulic quick change kit incl. mobile and fixed parts (2 pieces each) mounted with adapters to rotator